

HIMAWARI – 8 UPDATE

2013 OCONUS GOES-R PG

BILL WARD

PACIFIC REGION HEADQUARTERS

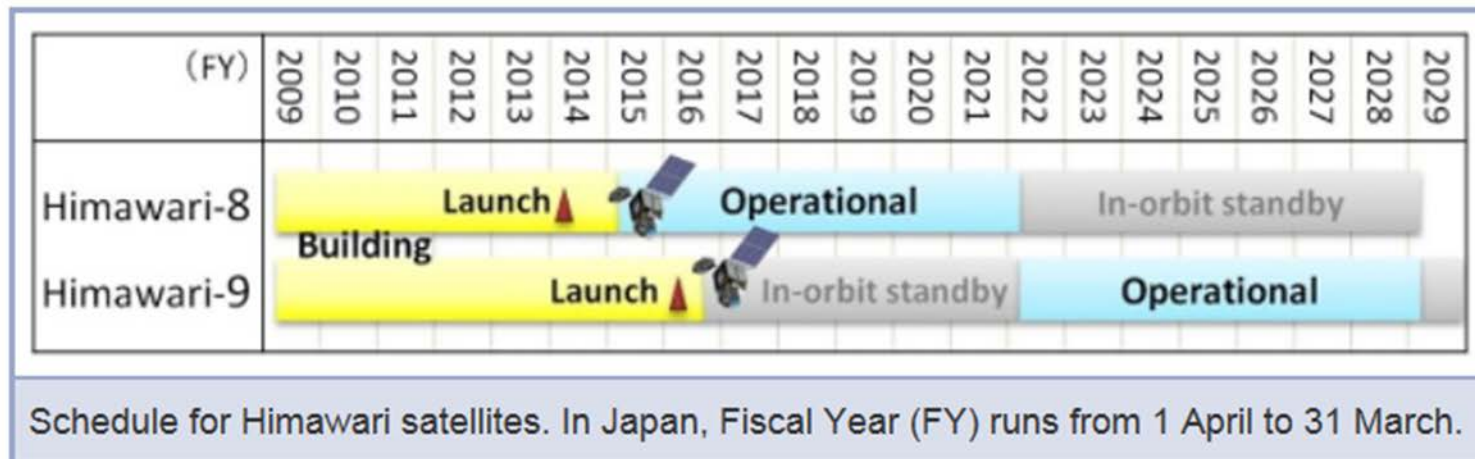
HONOLULU, HAWAII

TOPICS

- Satellite Operations Plan for Himawari-8/9
- Expected configuration setup for data transport from JMA
- Potential data transportation options (5)
- Data transport issues
- Himawari team

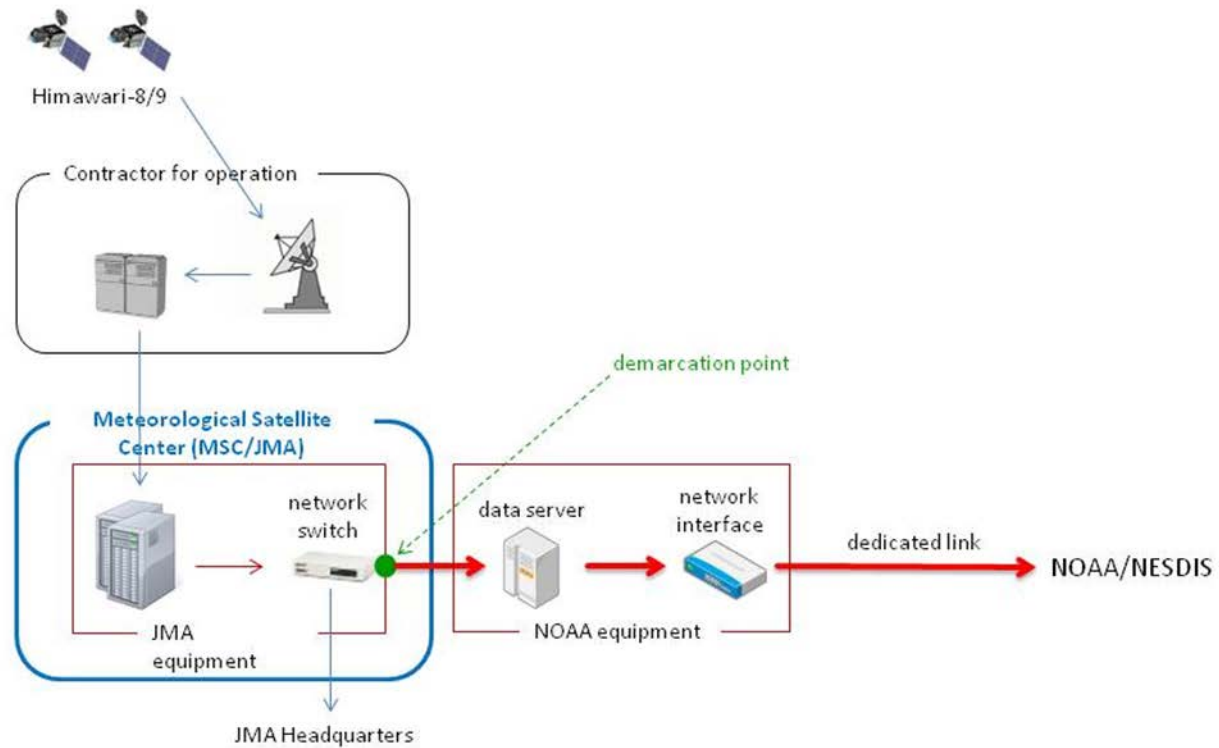
Satellite operation plan for Himawari-8/9

- To provide continuous observations, JMA plans to launch Himawari-8 in 2014 and operate in 2015. To ensure robustness of the observation system, launch of Himawari-9 is scheduled for 2016. JMA will operate Himawari-8/9 ~140 degrees E covering the East Asia and Western Pacific regions.



HIMAWARI 8/9 OVERVIEW

- Provides 16 channels
- Full disk view every 10 minutes
- Typhoon monitoring every 2.5 minutes
- Land mark extraction every 30 sec.
- For additional information:
 - <http://mscweb.kishou.go.jp/himawari89/index.html>

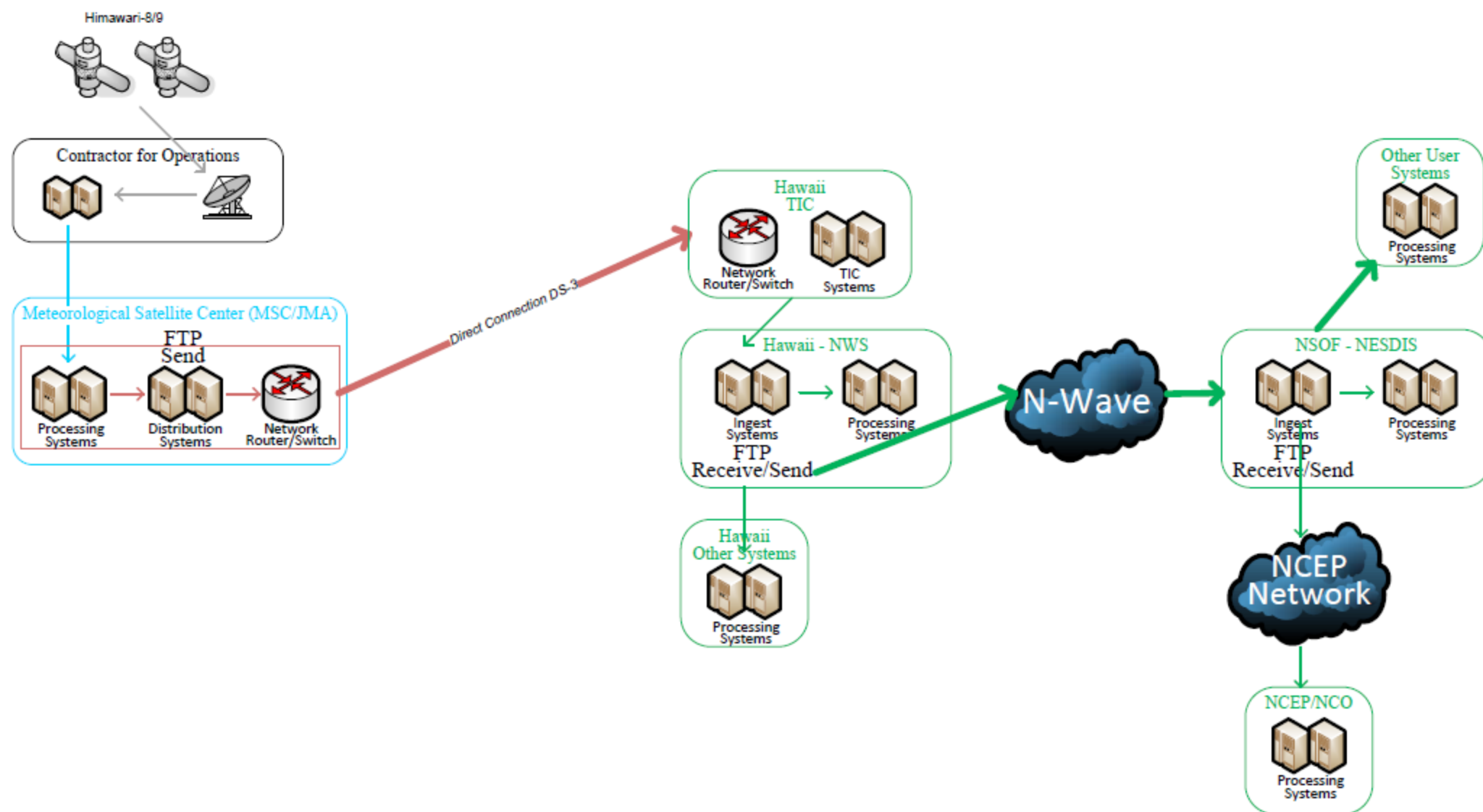


Conceptual diagram for direct distribution of the Himawari-8/9 data files to NOAA/NESDIS

JMA to NOAA Data Flows Options (MSC/JMA, Hawaii, NSOF, NCEP, Others)

Option 1 Direct Connect from JMA to Hawaii with N-Wave

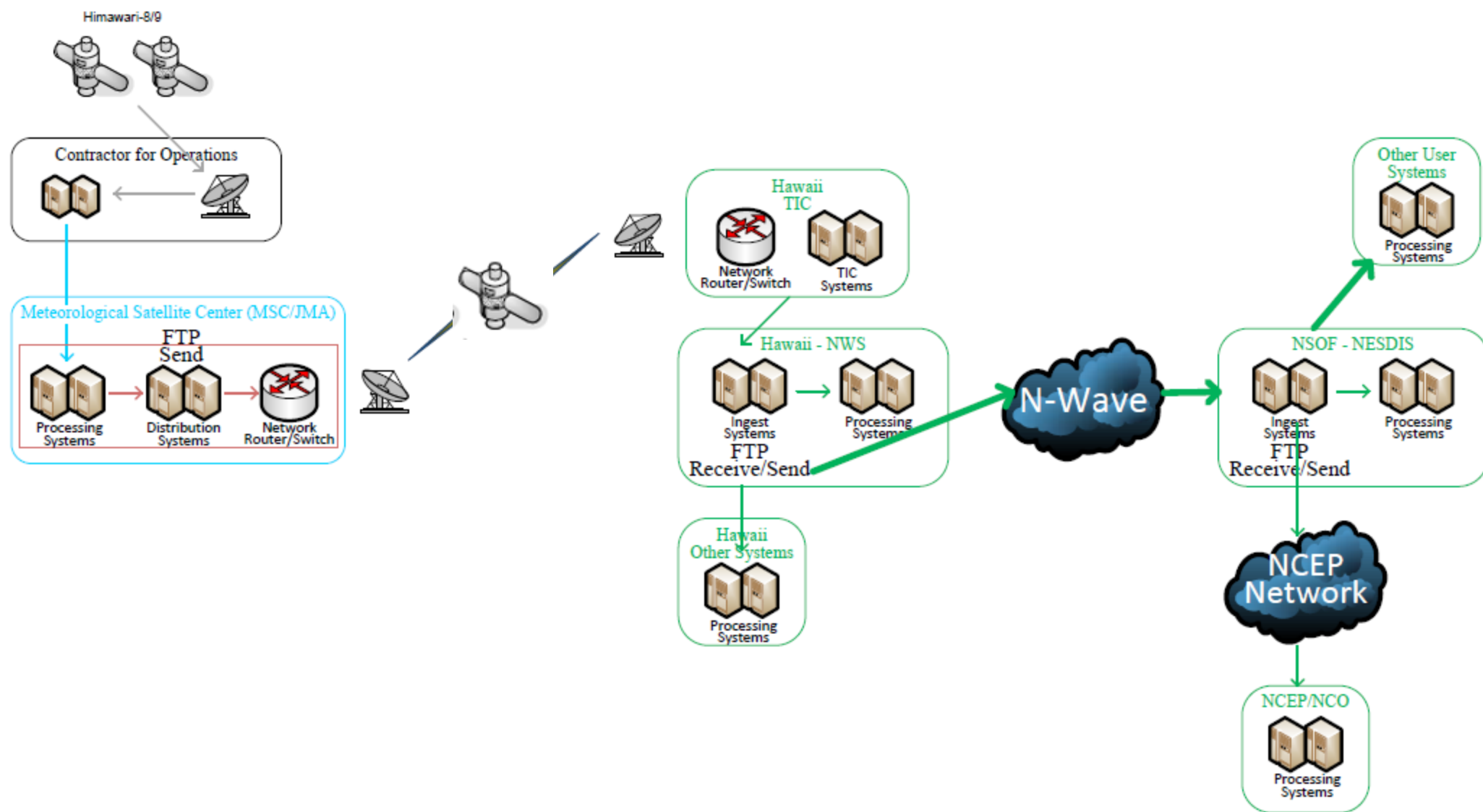
May 30, 2013



JMA to NOAA Data Flows Options (MSC/JMA, Hawaii, NSOF, NCEP, Others)

Option 2 Satellite Link from JMA to Hawaii with N-Wave

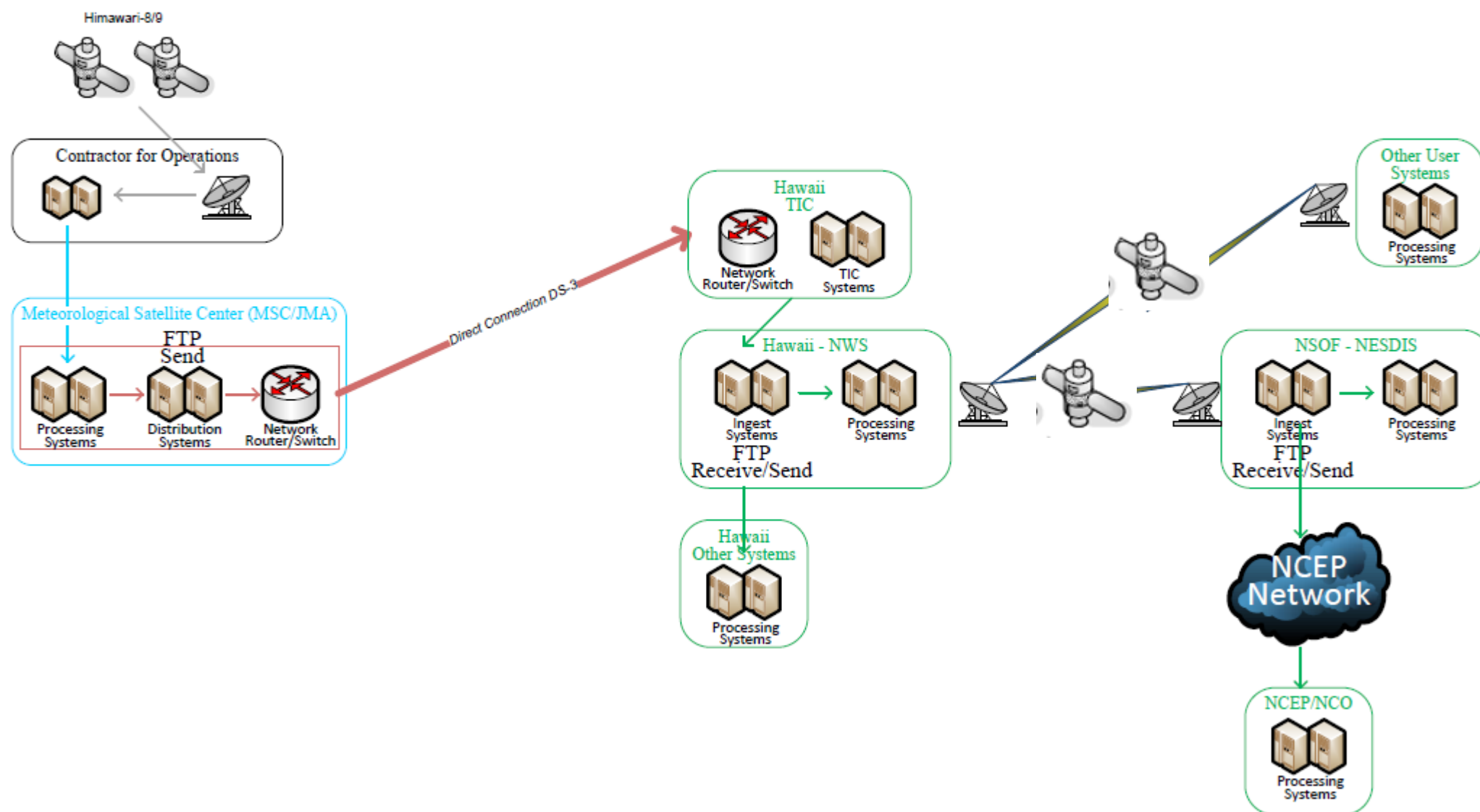
May 30, 2013



JMA to NOAA Data Flows Options (MSC/JMA, Hawaii, NSOF, NCEP, Others)

Option 3 Direct Connect from JMA to Hawaii with Domsat

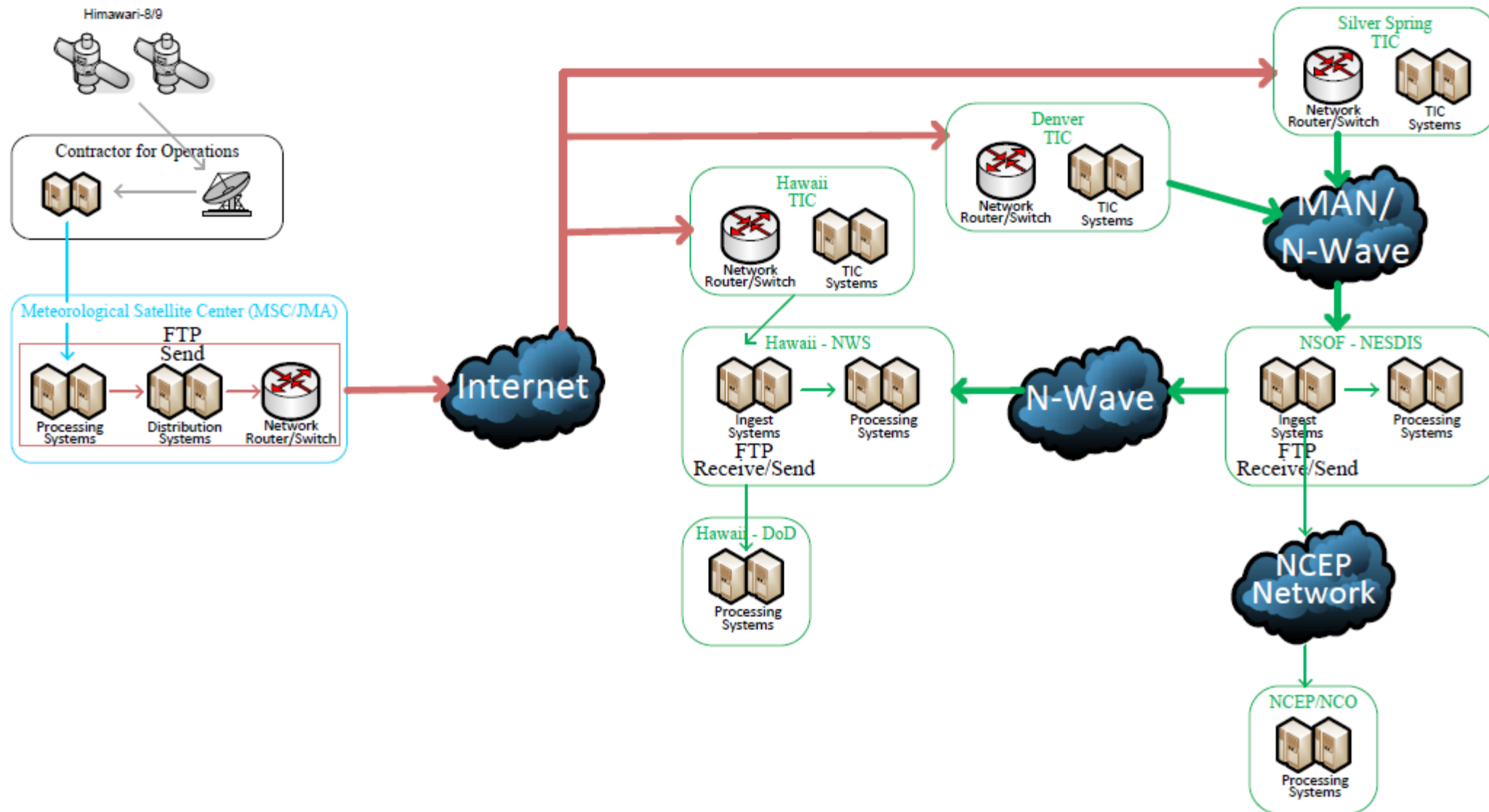
May 30, 2013



JMA to NOAA Data Flows Options (MSC/JMA, Hawaii, NSOF, NCEP, Others)

Option 4 Internet Link from JMA to Multiple NOAA Sites

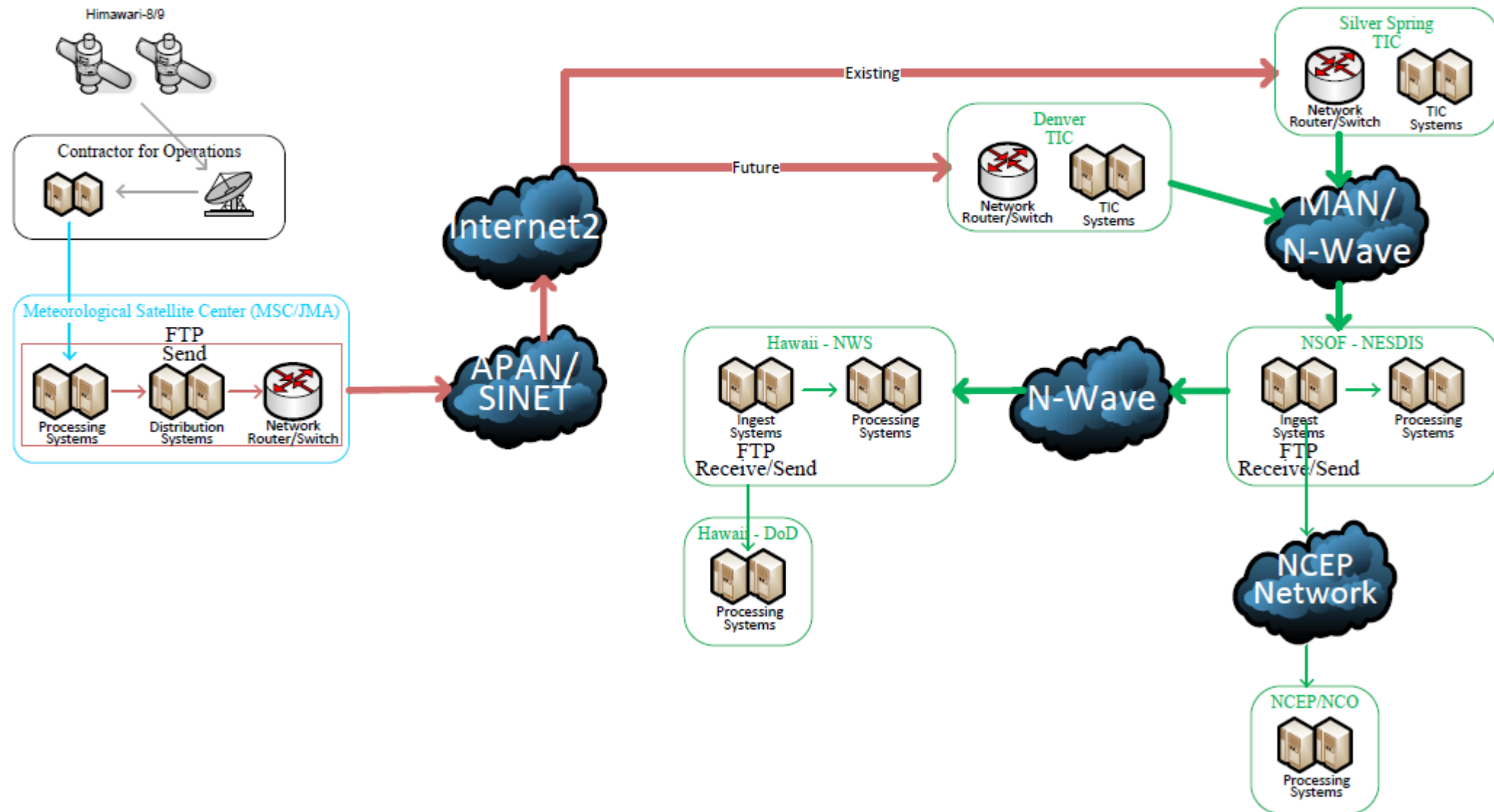
May 30, 2013



JMA to NOAA Data Flows Options (MSC/JMA, Hawaii, NSOF, NCEP, Others)

Option 5 NRENs Link from JMA to Multiple NOAA Sites

May 30, 2013



DATA TRANSPORT ???

- NUAGE does not have a SLA (Service Level Agreement)
 - Commercial provider required for primary
 - NUAGE should be a secondary backup for data transport
- HAWAII is not a TIC (Trusted Internet Connection)
- How does the data get to Guam
- APAN (Asia Pacific Area Network)/Strategic Intelligence Network (SINET)

RECENT FORMATION OF A HIMAWARI TEAM

- Getting data from JMA to Hawaii and on to NSOF (NOAA Satellite Operations Facility)/NESDIS
- Determine Bandwidth requirements?
- Getting data from JMA/JAXA to Hawaii and then to Guam, Alaska and NSOF/NESDIS as well as DoD
- Satellite Retransmission
 - COMSAT
 - Commercial Satellite
 - DOMSAT
 - Domestic Satellite
 - MTSAT
 - For Guam rebroadcast of lower temporal and spatial resolution data

THANKS

BILL WARD

NATIONAL WEATHER SERVICE

PACIFIC REGION HEADQUARTERS

HONOLULU, HAWAII

BILL.WARD@NOAA.GOV

808.532.6415