



**Geographic Information
Network of Alaska**
www.gina.alaska.edu

High Latitude Proving Ground / GINA Update

Proving Ground All-Hands Meeting

July 1, 2013

Presented by Tom Heinrichs, GINA

tom.heinrichs@alaska.edu

OCONUS Meeting: June 17-21, 2013 in Alaska

Logistics & Attendance

- Monday June 17 - Anchorage
 - Late afternoon gathering at WFO/AAWU/RFC
 - Reviewed NOAT directives
 - Discussion with SOOs
- Tuesday June 18 – Anchorage
 - Program updates
 - Alaska and Pacific Region experiences and needs
 - OCONUS products

OCONUS Meeting: June 17-21, 2013 in Alaska

Logistics & Attendance, continued 1

- Wednesday June 19 - Anchorage
 - Algorithm and products presentations
 - After lunch meeting at WFO/AAWU/RFC
 - Travel to Fairbanks in afternoon evening
- Thursday June 20 – Fairbanks
 - Fairbanks: local products and facilities
 - Fairbanks WFO presentations
 - Liaison presentations



OCONUS Meeting: June 17-21, 2013 in Alaska

Logistics & Attendance, continued 2

- Friday June 21 – Fairbanks
 - Fairbanks Command and Data Acquisition Station: FCDAS at Gilmore Creek
 - Army Corps of Engineers: permafrost tunnel



OCONUS Meeting: June 17-21, 2013 in Alaska

Action Items – Overview

- Broad-scale polar imagery, GOES + POES loops
 - SPoRT hybrid product
 - STAR/CIMSS polar mosaics
- Need for improved communications between PG and FOs
 - In general
 - Improved product feedback loops

OCONUS Meeting: June 17-21, 2013 in Alaska

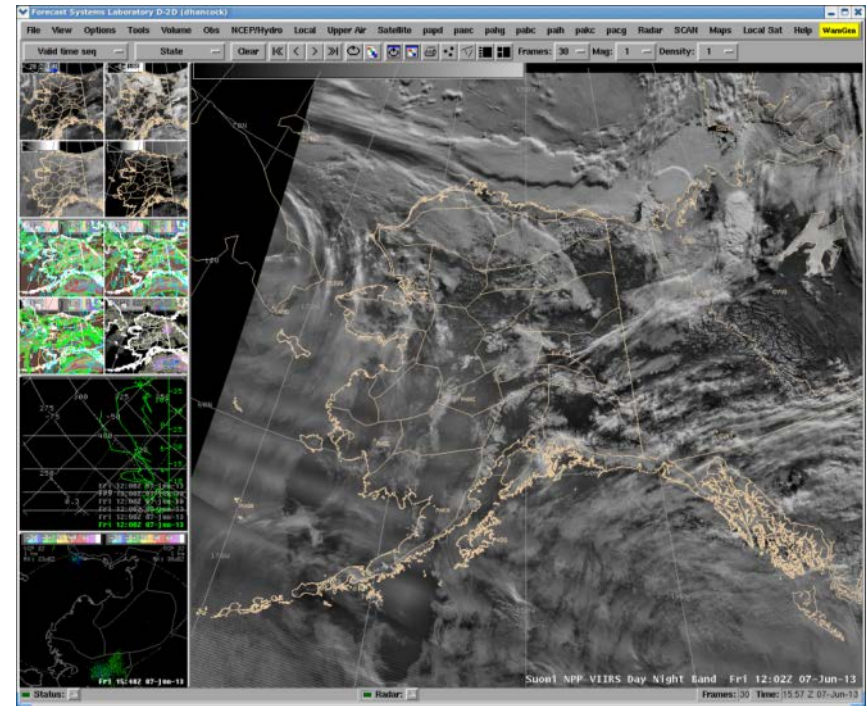
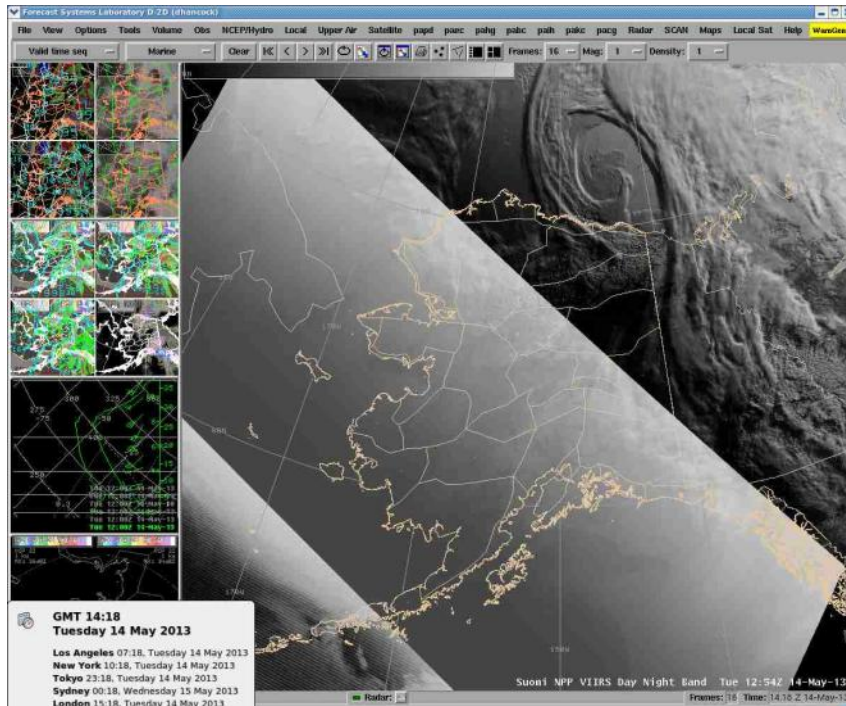
Action Items – Overview, continued

- Specific product follow-ups
 - Hyperspectral / Sounders
 - VOG
 - Simulated imagery
 - Lightning
 - FLS & clouds
- Low latency access to satellite data
 - Himawari – Japanese GEO
 - SNPP direct readout, low latency, local processing

An Ongoing, Iterative Process: Improvement to CSPP and VIIRS Day-Night Band

Before: May 14, 2013

After: June 7, 2013

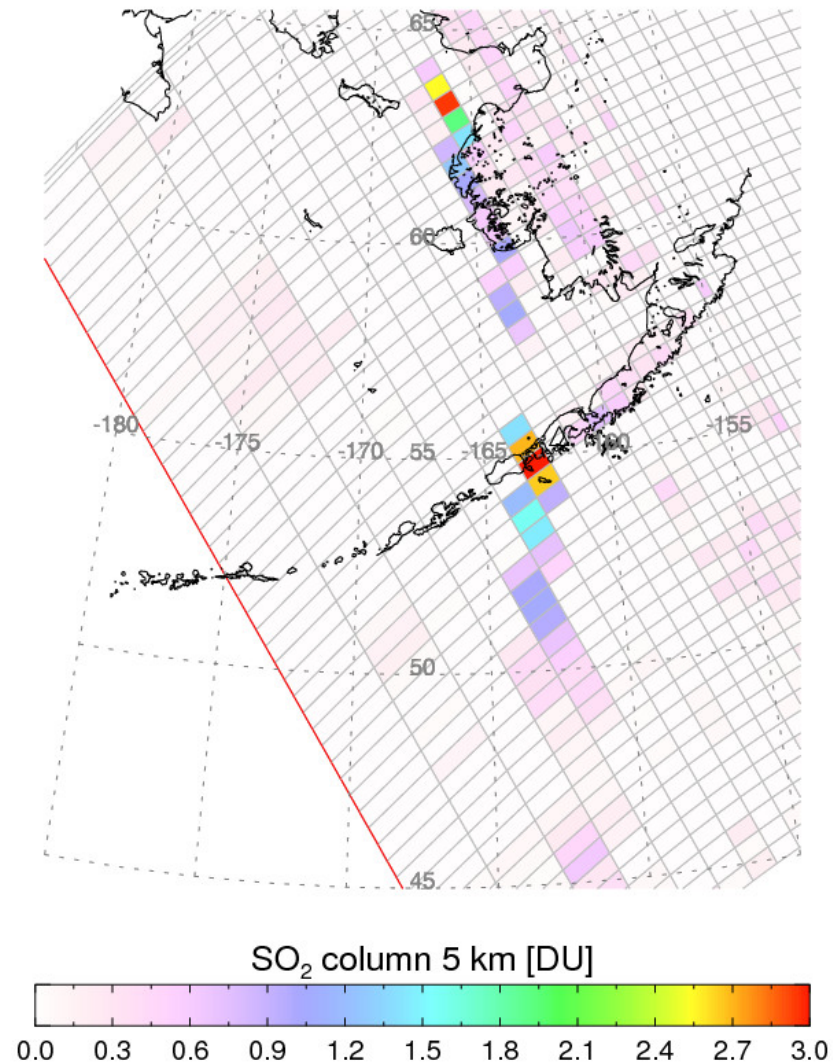


“One can still see discontinuities in the processing, but they are not likely to be operationally significant. Personally, I'm delighted.” –NWS Meteorologist Dan Hancock, June 7, 2013

NPP/OMPS - 06/27/2013 22:42-22:49 UT - Orbit 08620

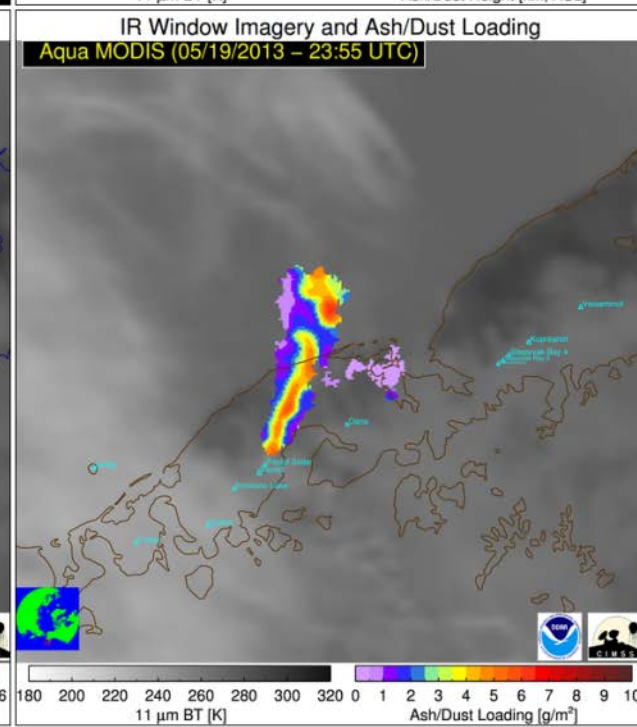
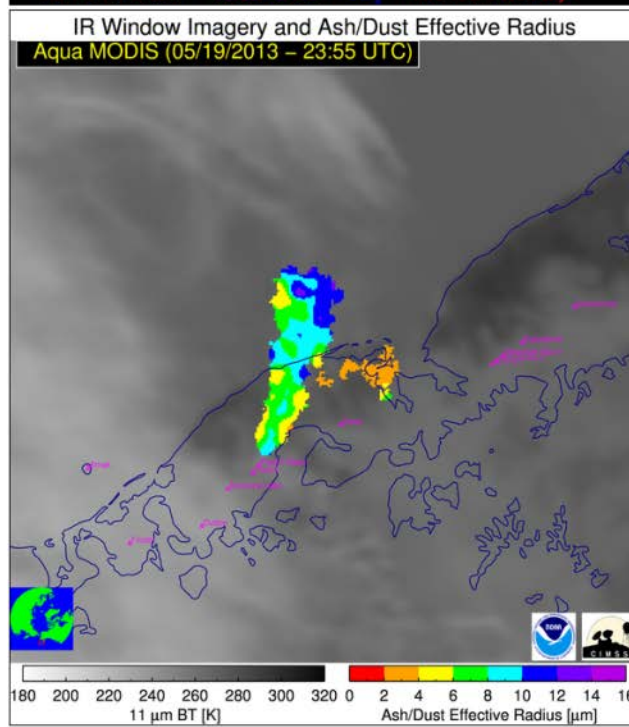
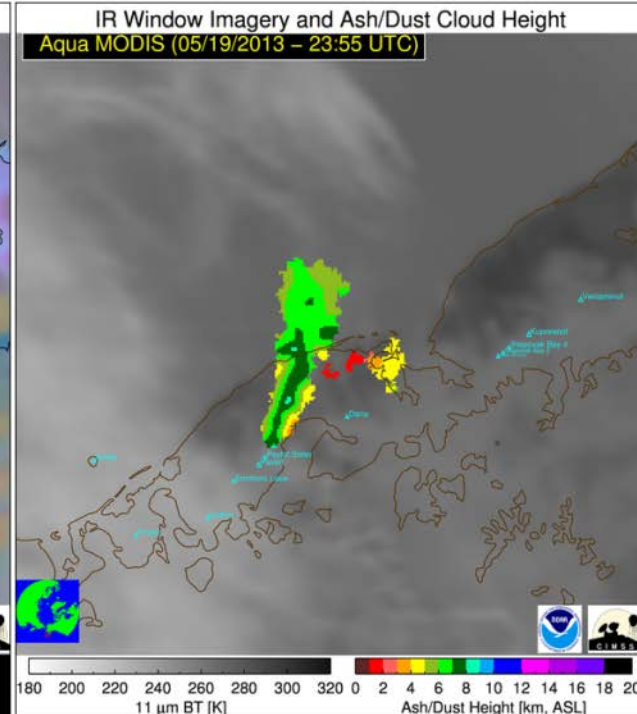
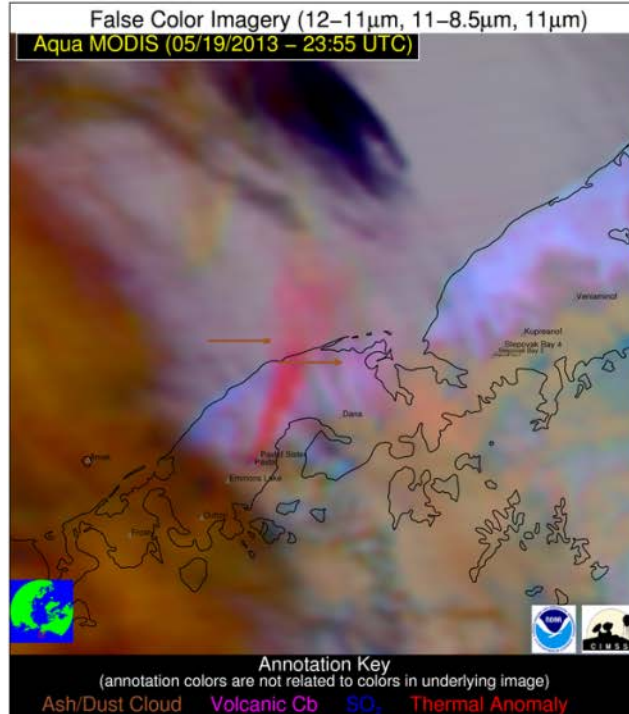
SO₂ mass: 0.000 kt; Area: 0 km²; SO₂ max: 5.16 DU at lon: -162.97 lat: 54.84 ; 22:45UTC

Pavlof SO₂



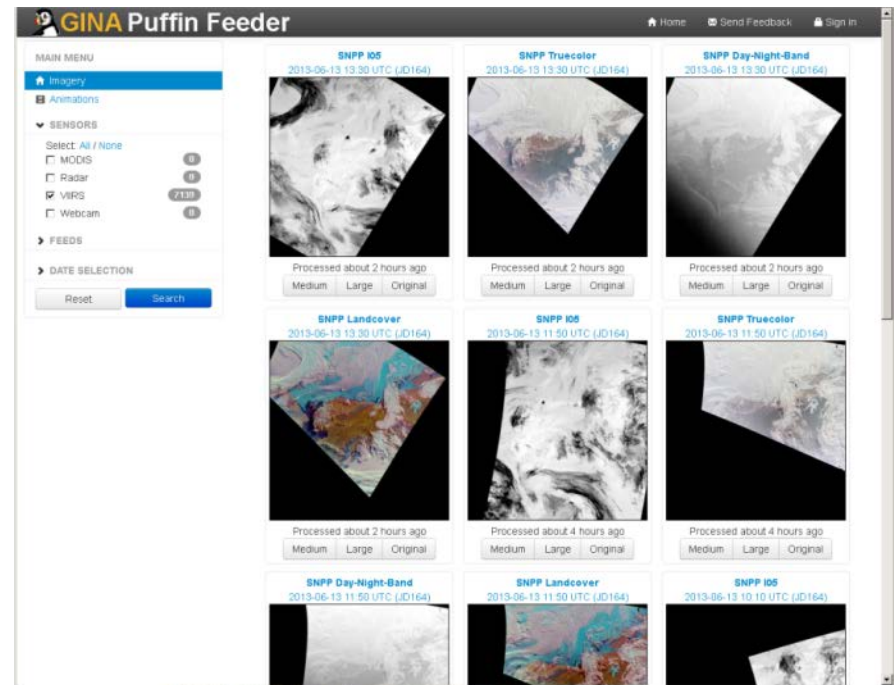
Courtesy: GINA - NASA Direct Readout Laboratory - NPP Ozone PEATE (slide from Nick Krotkov, NASA)

Pavlof Ash Products



Puffin Feeder Website

- Recently upgraded to allow user to sort by
 - Data platform / sensor
 - Range of dates
- *“Archive is useful when doing case studies,”*
 - Don Moore, MIC AAWU
- Can still be improved



feeder.gina.alaska.edu